



# QUICK START GUIDE

DOC00620  
REVISION A

# CONTENTS

Contents .....	2
1.0 Overview .....	3
2.0 Installation .....	3
2.1 System Requirements .....	3
2.2 Installation.....	3
3.0 Application Operation.....	4
3.1 Quick Start.....	4
Revision History .....	6

## 1.0 OVERVIEW

The Memsense Communication Interface Protocol Evaluation Software (MS-CIP Eval SW) is implemented as a simple application to allow customers to rapidly connect to, configure and collect data from a Memsense Inertial Measurement Unit (IMU). The software currently supports the MS-IMU3020.

## 2.0 INSTALLATION

### 2.1 SYSTEM REQUIREMENTS

The MS-CIP Evaluation Software requirements are included in the table below.

System Parameter	Requirement
Operating System	Windows 7 (.NET 4.5 or later)
Minimum Graphics Resolution	1024 x 768
Graphics Device	DirectX 9 with WDDM 1.0 or higher driver
Minimum RAM	1 GB
USB Port	1 port available

### 2.2 INSTALLATION

The MS-CIP Evaluation Software can be downloaded by following the link below to the Memsense website under the MS-IMU3020 product page (<https://memsense.com/products/ms-imu3020>) and clicking the MS-CIP Evaluation Software link. Simply follow the installation instructions provided in the installer.

## 3.0 APPLICATION OPERATION

### 3.1 QUICK START

#### 1. Connect Green IMU end of Cable

Connect the green end of MS-IMU3020 interface cable to the MS-IMU3020



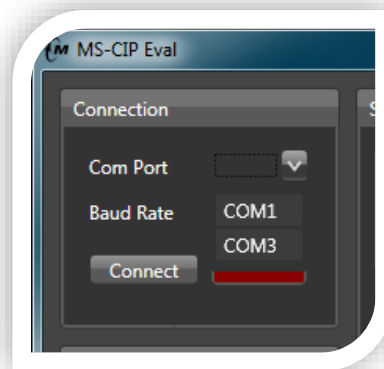
#### 2. Connect the Black Circular Connector

Connect the black end of the MS-IMU3020 interface cable to the USB –DAQ.



#### 3. Launch the MS-CIP Eval App

Start the MS-CIP Eval application from Start>All Programs>Memsense>MS-CIP Eval. Click the drop down arrow for the Com Port selection to view the available com ports as in the figure below.



#### 4. Connect the Memsense USB-DAQ

Upon connecting the Memsense USB-DAQ to the USB port of the computer an additional com port associated with the USB-DAQ will appear in the Com Port drop down.



#### 5. Select the Com Port

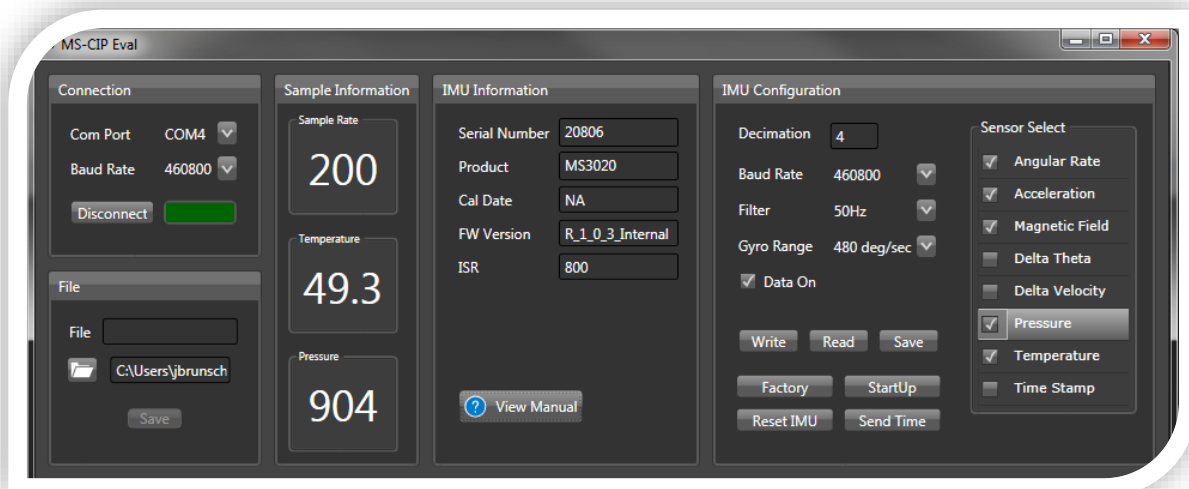
Select the com port that became available after plugging in the USB-DAQ.

#### 6. Select the Baud Rate

Select 460800 bps from the Baud Rate options in the Connection window. The factory default baud rate for the MS-IMU3020 is 460800 bps, unless when ordering your device it was specified at a different factory default baud rate. If your device was ordered with a different baud rate then select that baud rate.

#### 7. Click Connect

Click the Connect button in the Connection window. Upon clicking the Connect button the connection indicator turns from red to green indicating a successful connection. If the connection indicator turns yellow it usually means the baud rate doesn't match the device or a connector is disconnected.



## REVISION HISTORY

REV	STATUS	DESCRIPTION	DATE
A	Released	Initial Release	11-06-2018