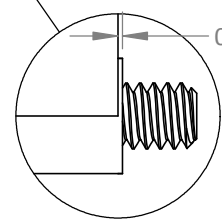


Dowel Pin Slot

0.0010

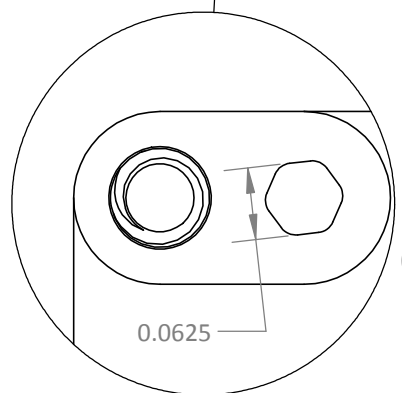
Relative to All Mounting Surfaces



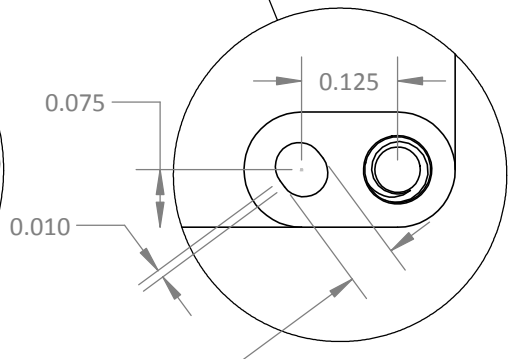
DETAIL C  
SCALE 4 : 1

Mounting  
2-56 Captive  
Socket Head  
Cap Screw  
18-8 Stainless Steel  
5/64" Drive  
Note 1

**2D BAR CODE**  
MEMSENSE  
MS-IMU3025  
MFG DATE:3/23/2019  
PN:MP00075-001  
REV:C  
SN:29000



DETAIL A  
SCALE 6 : 1



DETAIL B  
SCALE 4 : 1

Note 1: Suggested Maximum Torque: 2.5 in-lbs  
While this value is provided from reliable sources, there are many variables that will effect this value and the use of this information is at the sole risk of the user.

TITLE: DOC00733_Rev-B_MS-IMU3025 Dimensional Drawing Imperial			
UNLESS OTHERWISE SPECIFIED:		NAME	DATE
DIMENSIONS ARE IN INCHES		DRAWN	JB
TOLERANCES		ENG APPR.	DL
ANGULAR: MACH ±0.1		MFG APPR.	EL
TWO PLACE DECIMAL ±0.010		DOC NO	
THREE PLACE DECIMAL ±0.003		DOC00733	
FOUR PLACE DECIMAL ±0.0005		REV	
INTERPRET GEOMETRIC TOLERANCING PER: ASME Y14.5-2009		B	
MATERIAL	6061-T6 AL	SIZE	REV
FINISH	MIL-A-8625 ANODIZE	A	C
DO NOT SCALE DRAWING		SCALE: 2:1	WEIGHT:
		SHEET 1 OF 1	



**PROPRIETARY AND CONFIDENTIAL**  
THE INFORMATION CONTAINED IN THIS DRAWING IS THE SOLE PROPERTY OF MEMSENSE, LLC. ANY REPRODUCTION IN PART OR AS A WHOLE WITHOUT THE WRITTEN PERMISSION OF MEMSENSE, LLC IS PROHIBITED.